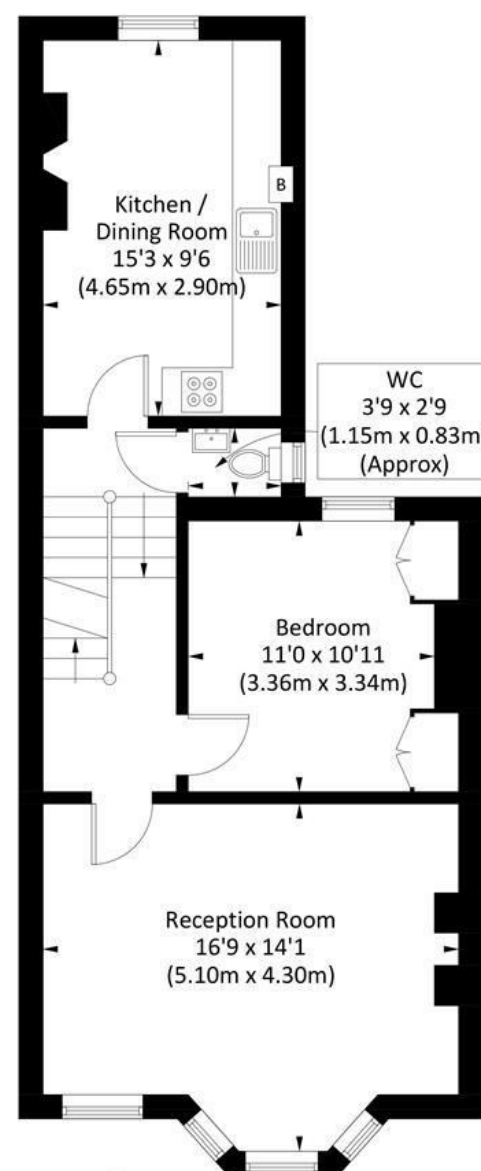
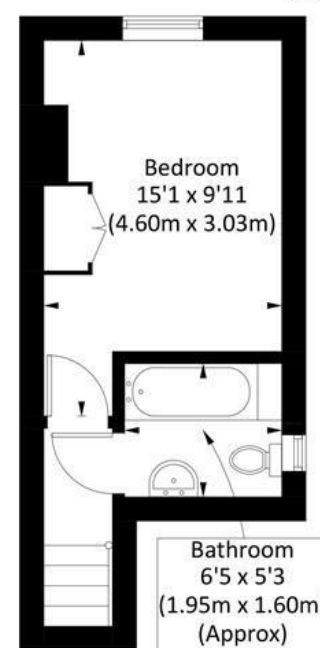


## DEODAR ROAD, SW15

Approx. gross internal area 790 Sq Ft. /73.4 Sq M



**First Floor**  
(596 Sq Ft.)



**Third Floor**  
(194 Sq Ft.)

Illustration for identification purposes only, measurements are approximate, not to scale. FloorplansUsketch.com © 2023 (ID926551)

**DISCLAIMER**•These particulars are intended to give a fair and substantially correct overall description for the guidance of intending purchasers and do not constitute an offer or part of a contract. Prospective purchasers and/or lessees ought to seek their own professional advice.

•All descriptions, dimensions, areas, references to condition and necessary permissions for use and occupation and other details are given in good faith and are believed to be correct, but any intending purchasers should not rely on them as statements or representations of fact, but must satisfy themselves by inspection or otherwise as to the correctness of each of them.  
•All measurements are approximate.



## Deodar Road, Putney, SW15

A stunning two bedroom flat occupying the top two floors of this period house in central Putney. Offered on an unfurnished basis and benefiting from being moments from all transport, the high street and river, the accommodation comprises an entrance hallway, bright reception room with bay window, fully fitted eat-in kitchen, two good size bedrooms, lovely bathroom with shower over the bath and guest WC. Deodar Road is a highly sought-after residential road perfectly located for everything Putney has to offer. Available late March 2026.



- SPLIT LEVEL FLAT
- EAT-IN KITCHEN
- BATHROOM
- PRIME ROAD
- EPC C
- RECEPTION ROOM
- TWO DOUBLE BEDROOMS
- GUEST WC
- CLOSE TO HIGH STREET, RIVER & TRANSPORT
- COUNCIL TAX BAND E

Per Month  
**£2,250 Per Month**



